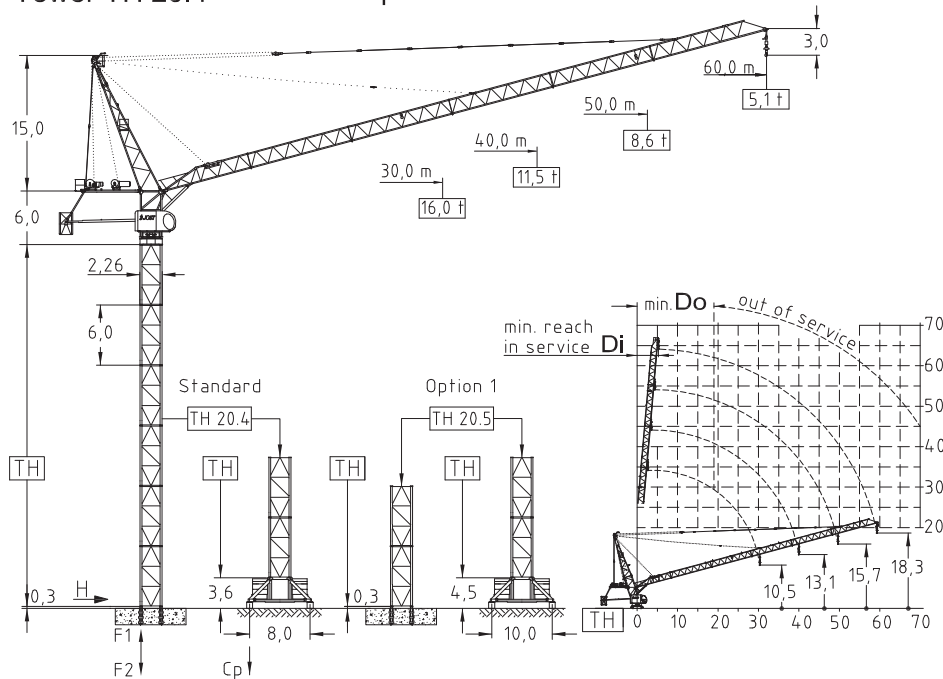


JL 416.24 - 24,0 ton Luffing crane
Tower TH 20.4 4-fall rope

JRL Group
4 Elstree Way, Borehamwood
Hertfordshire, WD6 1RN

+44 0208 9537 800



Jib (m)	Jib reach (m)		Tower heights all data in (m)			
			Standard Tower		Option 1	
	Di	Do	Foundat.	Chassis	Foundat.	Chassis
30,0	3,0	20,0	TH 20.4	UC 8,0-20.4	TH 20.5	UC 10,0-20.5
40,0	4,0	20,0	54,0	48,0	75,0	63,0
50,0	5,0	20,0	48,0	42,0	69,0	60,0
60,0	6,0	20,0	42,0	36,0	63,0	54,0
			4,2,0	3,0,0	63,0	48,0

EN 14439 : 2008
WIND C 25
ISO 9001 : 2008



Jib		Radius & Capacity											
m	rope	max. Load	Jib reach										
			t	m	22	25	27	30	35	40	45	50	55
60,0	⊕	12,0	27,1	12,00	12,00	12,00	10,80	9,18	7,95	7,00	6,24	5,56	5,10
	⊖	-	-	-	-	-	-	-	-	-	-	-	-
50,0	⊕	12,0	36,4	12,00	12,00	12,00	12,00	10,88	9,66	8,60			
	⊖	24,0	18,4	19,89	17,40	16,05	14,37	12,20	10,58	9,31	8,30		
40,0	⊕	12,0	4,0	12,00	12,00	12,00	12,00	11,50					
	⊖	24,0	19,5	21,12	18,50	17,08	15,30	13,02	11,30				
30,0	⊕	12,0	30,0	12,00	12,00	12,00	12,00						
	⊖	24,0	20,3	22,08	19,34	17,86	16,00						

Hoist 90,0 kW FI							
t	m/min	4,8	6,2	8,8	10,6	11,2	12,0
		⊕	106	90	68	58	46
t <th rowspan="2">m/min</th> <th>9,6</th> <th>12,4</th> <th>17,6</th> <th>21,2</th> <th>22,4</th> <th>24,0</th>	m/min	9,6	12,4	17,6	21,2	22,4	24,0
		⊖	53	45	34	29	23
Drum capacity		1200,0 m					

Hoist 132,0 kW FI							
t	m/min	5,2	6,0	7,8	10,6	12,0	12,0
		⊕	130	120	98	76	66
t <th rowspan="2">m/min</th> <th>10,4</th> <th>12,0</th> <th>15,6</th> <th>21,2</th> <th>24,0</th> <th>24,0</th>	m/min	10,4	12,0	15,6	21,2	24,0	24,0
		⊖	65	60	49	38	33
Drum capacity		1200,0 m					

Power requirement	
400V (±10%) - 50Hz	

Motor	45,0 kW FI	2 x 4,4 kW	4 x 7,5 kW
t/v	2,0 min	0,67 rpm	25,0 m/min
Power requirement		Hoist 90,0 kW	230,0 kVA
Upper part		Hoist 132,0 kW	270,0 kVA

Shipping		
	Truck	Cont.
Top crane	9	10
Tower 2 unit	1	1
Climbing	2	2
Chasis	1	1

Counter weight	
Block 1	10 x 3,4 t
Block 2	-
Total	34,0 t

Ropes		
	D (mm)	N/mm ²
Hoist	20,0	1960
Luffing	20,0	1960