

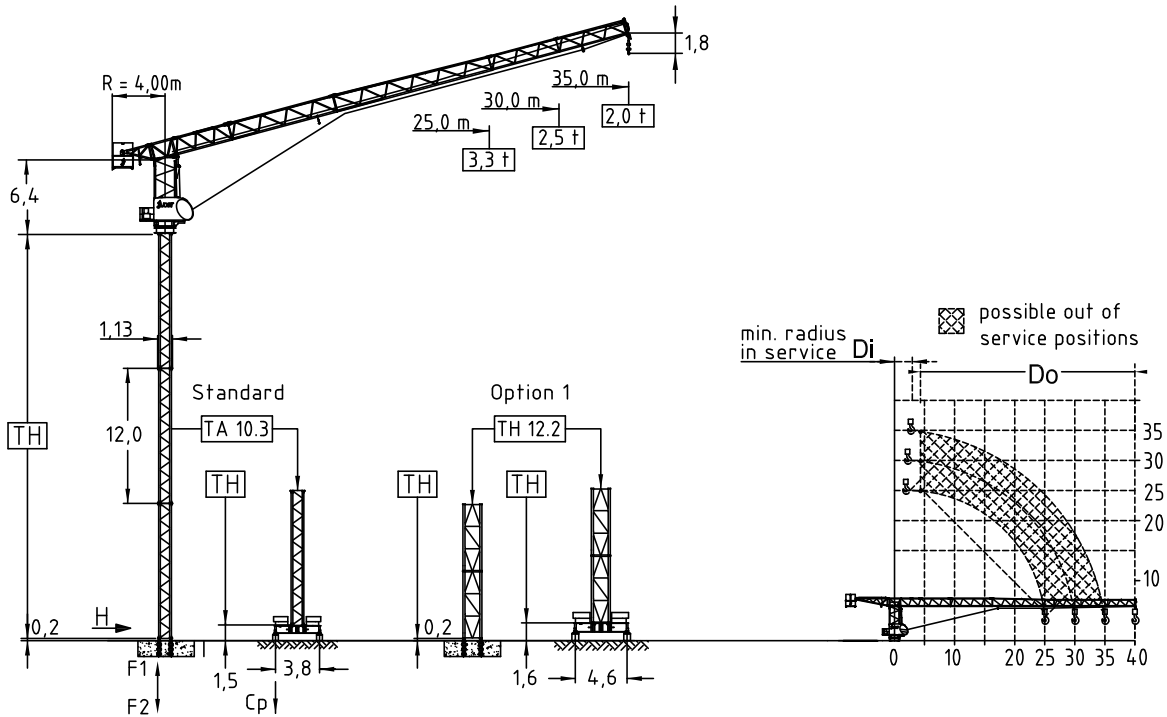
JTL 68.4s

Tower TA 10.3
Tower TH 12.2

4,0 ton
2-fall rope

JRL Group
4 Elstree Way, Borehamwood
Hertfordshire, WD6 1RN

+44 0208 9537 800



Jib (m)	Jib radius (m)		Tower heights all data in (m)			
			Standard Tower		Option 1	
	Di	Do	TA 10.3	FC 3,8-10.3	TH 12.2	FC 4,6-12.2
25,0	2,5	4,0	30,0	30,0	30,0	30,0
30,0	2,5	4,0	30,0	27,0	30,0	30,0
35,0	2,8	4,0	27,0	24,0	27,0	27,0

Hoist 22,0 kW FI						
⊘	t	1,2	1,8	2,8	4,0	4,0
	m/min	62	51	41	31	26
Drum capacity 187,0 m						

Power requirement
400V (±10%) - 50Hz

Radius & Capacity										
Jib m	rope	max. Load t		Jib radius m						
		4,0	17,7	15	18	20	22	25	30	35
35,0	⊘	4,0	17,7	4,00	3,94	3,55	3,23	2,83	2,35	2,00
30,0	⊘	4,0	18,9	4,00	4,00	3,77	3,43	3,01	2,50	
25,0	⊘	4,0	20,6	4,00	4,00	4,00	3,75	3,30		

Shipping		
	Truck	Cont.
Top crane	3	4
Tower 2 units	1	1
Climbing	1	1
Chassis	1	1

Motor	7,5 kW FI	1 x 4,0 kW FI	2 x 3,0 kW
t/v	2,00 min	0,77 rpm	25,0 m/min
Power requirement		Hoist 22,0 kW	45 kVA
Upper part			

Counter weight		Ropes		
Block	Weight	Hoist	D (mm)	N/mm ²
Block 1	3 x 4,0 t			
Block 2	1 x 3,3 t			
Total	15,3 t			



EN 14439
WIND C 25

JOST Cranes GmbH & Co. KG
Schmiedweg 3
85604 Zorneding
Germany
Fon +49-8106 9995580
Fax +49-8106 9995582
Mail info@jostcranes.de
Web www.jostcranes.de

Edition 02-2017