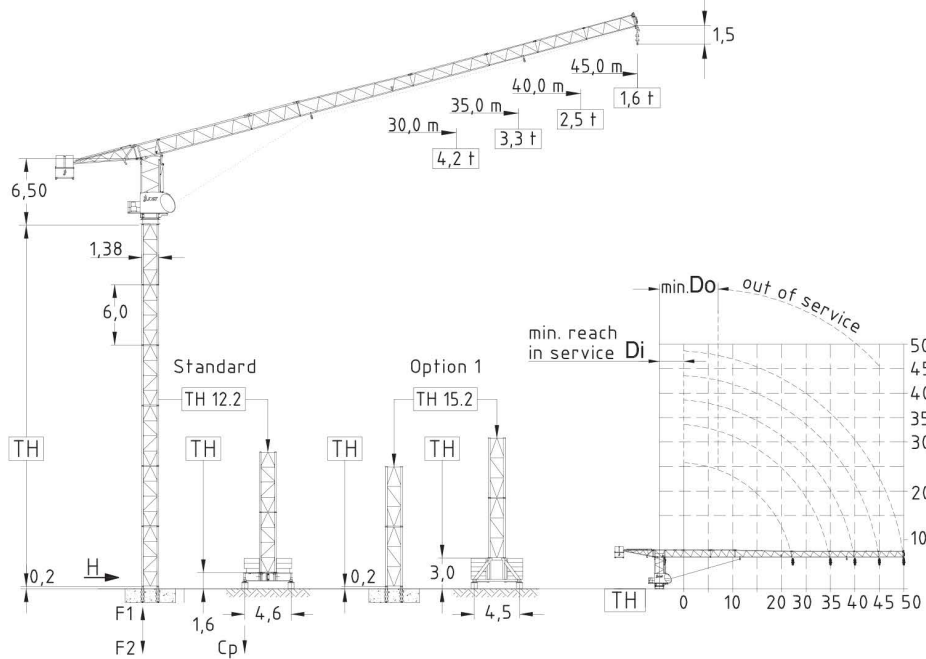


JTL 108.6 - 6,0 ton
Tower TH 12.2 4-fall rope

**Topless
Luffing crane**

JRL Group
4 Elstree Way, Borehamwood
Hertfordshire, WD6 1RN

+44 0208 9537 800



Jib (m)	Jib reach (m)		Tower heights all data in (m)			
			Standard Tower		Option 1	
	Di	Do	Foundat. TH 12.2	Chassis FC 4,6-12.2	Foundat. TH 15.2	Chassis UC 4,5-15.2
30,0	3,6	10,9	33,0	30,0	39,0	36,0
35,0	3,6	10,9	30,0	30,0	36,0	33,0
40,0	3,6	9,6	27,0	27,0	33,0	30,0
45,0	3,6	9,6	24,0	24,0	30,0	27,0

EN 14439 : 2008
WIND C 25
ISO 9001 : 2008



Jib rope	max. Load	Radius & Capacity								
		Jib reach								
m	t	m	18	20	22	25	30	35	40	45
45,0	3,0	25,6	3,00	3,00	3,00	3,00	2,52	2,13	1,83	1,60
	6,0	13,3	4,36	3,90	3,53	3,07	2,52	2,13	1,83	1,60
40,0	3,0	33,9	3,00	3,00	3,00	3,00	3,00	2,50		
	6,0	17,6	6,00	5,22	4,76	4,15	3,42	2,89	2,50	
35,0	3,0	35,0	3,00	3,00	3,00	3,00	3,00	3,00		
	6,0	19,9	6,00	5,94	5,45	4,70	3,91	3,30		
30,0	3,0	30,0	3,00	3,00	3,00	3,00	3,00			
	6,0	21,4	6,00	6,00	5,82	5,08	4,20			

Hoist 22,0 kW FI							
t	m/min						
	0,7	1,2	1,8	2,8	3,0	3,0	
88	72	58	44	38	22		
t	m/min						
	1,4	2,4	3,6	5,6	6,0	6,0	
44	36	29	22	19	11		
Drum capacity			550,0 m				

Hoist 30,0 kW FI							
t	m/min						
	0,7	1,0	1,6	2,4	3,0	3,0	
124	114	90	68	58	32		
t	m/min						
	1,4	2,0	3,2	4,8	6,0	6,0	
62	57	45	24	29	16		
Drum capacity			970,0 m				

Power requirement
400V (±10%) - 50Hz

Motor	11,0 kW FI	1 x 3,0 kW	2 x 5,0 kW
t/v	2,50 min	0,77 rpm	25,0 m/min
Power requirement		Hoist 22,0 kW	50 kVA
Upper part		Hoist 30,0 kW	60 kVA

Shipping		
	Truck	Cont.
Top crane	5	6
Tower 2 unit	1	1
Climbing	1	1
Chassis	1	1

Counter weight	
Block 1	2 x 4,4 t
Block 2	1 x 7,2 t
Total	16,0 t

Ropes		
	D (mm)	N/mm ²
Hoist	10,0	1960