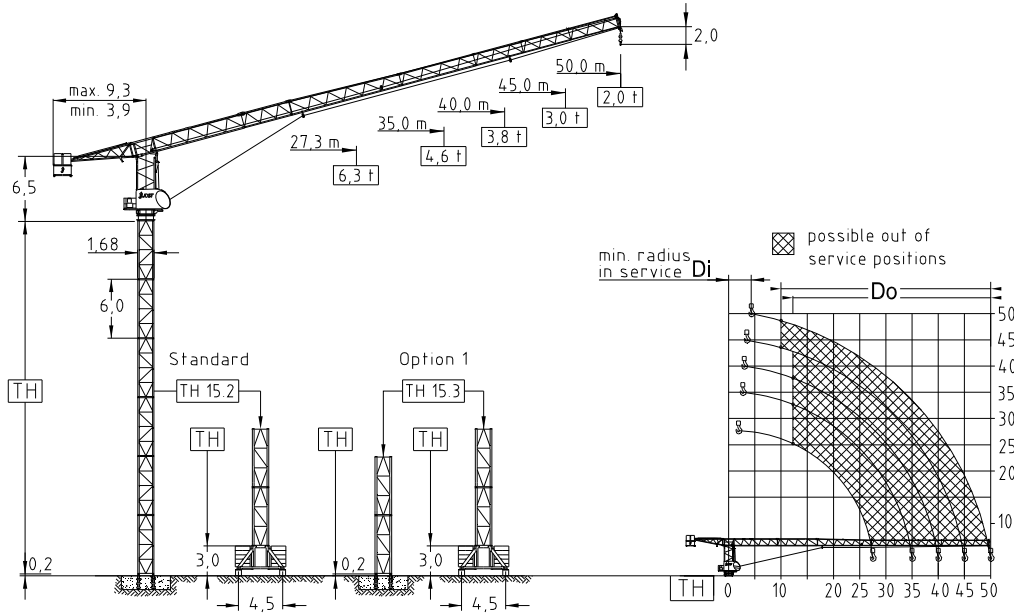


JTL 168.004 - Record book

JRL Group
4 Elstree Way, Borehamwood
Hertfordshire, WD6 1RN

1.4 Specification sheet

+44 0208 9537 800



		Tower heights all data in (m)			
Jib (m)	Jib radius (m)	Standard Tower		Option 1	
		Foundat.	Chassis	Foundat.	Chassis
		TH 15.2	UC 4,5-15.2	TH 15.3	UC 4,5-15.3
27,3	2,2	39,0	39,0	51,0	39,0
35,0	2,8	36,0	33,0	48,0	33,0
40,0	3,2	33,0	30,0	45,0	30,0
45,0	3,6	30,0	27,0	42,0	27,0
50,0	4,1	27,0	24,0	39,0	24,0

		Hoist 37,0 kW FI					
t	0,9	1,1	2,0	3,0	3,5	4,0	
	m/min	160	148	112	80	72	42
t	1,8	2,2	4,0	6,0	7,0	8,0	
	m/min	80	74	56	40	36	21
Hook height	1-fall		480,0 m				
	2-fall		240,0 m				

		Hoist 45,0 kW FI					
t	1,0	1,2	2,0	3,8	3,9	4,0	
	m/min	188	172	138	88	68	50
t	2,0	2,4	4,0	7,6	7,8	8,0	
	m/min	94	86	69	44	34	25
Hook height	1-fall		560,0 m				
	2-fall		280,0 m				

		Radius & Capacity										
Jib (m)	rope	max. Load	Jib radius									
			22	25	27,3	30	35	40	45	50		
50,0	4,0	25,9	4,00	4,00	3,79	3,43	2,92	2,54	2,24	2,00	-	
	8,0	34,2	4,00	4,00	4,00	4,00	3,90	3,39	3,00	-		
45,0	4,0	17,3	6,25	5,46	4,97	4,50	3,81	3,30	2,90	-		
	8,0	38,1	4,00	4,00	4,00	4,00	4,00	3,80	-			
40,0	4,0	19,3	6,97	6,10	5,56	5,03	4,27	3,70	-			
	8,0	43,0	4,00	4,00	4,00	4,00	4,00	-				
35,0	4,0	20,7	7,05	6,65	5,98	5,42	4,60	-				
	8,0	45,0	4,00	4,00	4,00	4,00	-					
27,3	4,0	21,7	7,89	6,91	6,30	-	-					
	8,0	47,0	4,00	4,00	4,00	-						

Power requirement	
400V (±10%) - 50Hz	

Shipping		
	Truck	Cont.
Top crane	5	6
Tower 2 units	1	1
Climbing	1	1
Chassis	1	1

Motor	15,0 kW FI	1 x 4,4 kW FI	2 x 5,0 kW
t/v	2,0 min	0,77 rpm	25,0 m/min
Power requirement Upper part	Hoist 37,0 kW		85 kVA
	Hoist 45,0 kW		100 kVA
Counter weight		Ropes	
Block 1	3 x 5,5 t		D (mm) N/mm ²
Block 2	3 x 1,7 t	Hoist	16,0 1960
Block 3	-	JOST Cranes GmbH reserve the right to alter or amend any information contained in this datasheet without prior notice and no responsibility can be accepted for errors or omissions.	
Total	21,6 t		



EN 14439
WIND C 25

JOST Cranes GmbH & Co. KG
Schmiedweg 3
85604 Zorneding
Germany
Fon +49-8106 9995580
Fax +49-8106 9995582
Mail info@jostcranes.de
Web www.jostcranes.de

Edition 01-2015