

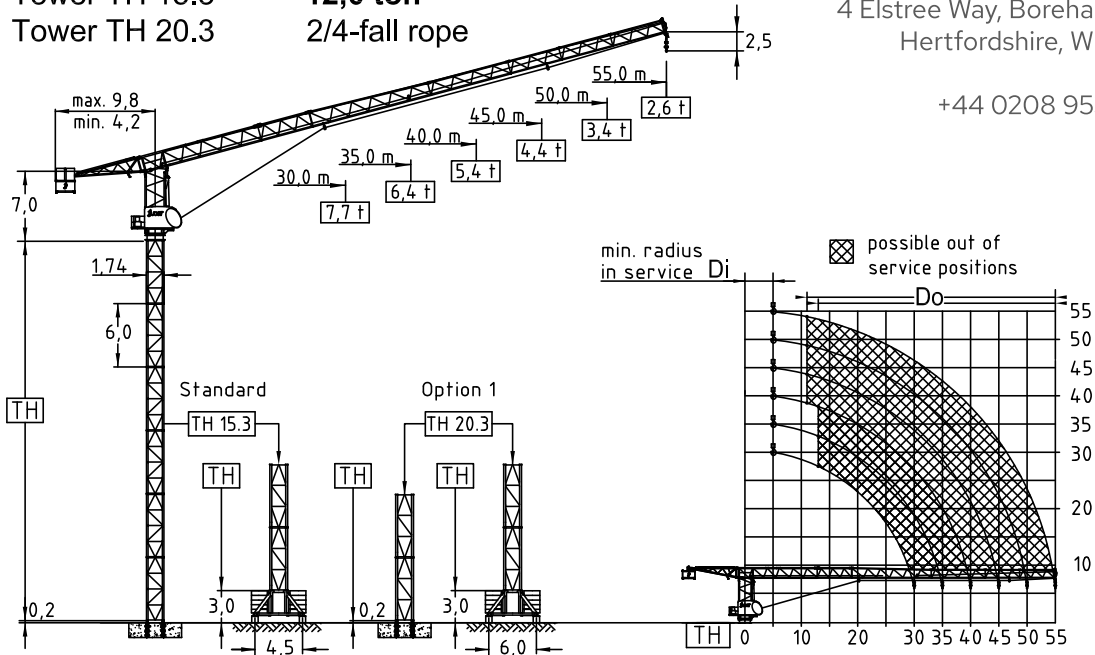
JTL 208.12

Tower TH 15.3
Tower TH 20.3

12,0 ton
2/4-fall rope

JRL Group
4 Elstree Way, Borehamwood
Hertfordshire, WD6 1RN

+44 0208 9537 800



		Tower heights all data in (m)				
Jib (m)	Jib radius (m)	Standard Tower		Option 1		
		Foundat.	Chassis	Foundat.	Chassis	
	Di	Do	TH 15.3	UC 4,5-15,3	TH 20.3	UC 6,0-20,3
30,0	2,5	13,0	48,0	36,0	54,0	42,0
35,0	2,8	13,0	45,0	33,0	51,0	39,0
40,0	3,2	11,0	42,0	30,0	48,0	36,0
45,0	3,6	11,0	39,0	27,0	45,0	33,0
50,0	4,1	11,0	36,0	24,0	42,0	30,0
55,0	4,5	11,0	33,0	21,0	39,0	30,0

Radius & Capacity												
Jib		max. Load		Jib radius								
m	rope	t	m	20	23	25	30	35	40	45	50	55
55,0	⌋	6,0	25,0	6,00	6,00	6,00	4,97	4,22	3,66	3,23	2,88	2,60
	⌋⌋	12,0	-	-	-	-	-	-	-	-	-	-
50,0	⌋	6,0	29,2	6,00	6,00	6,00	5,28	4,69	4,31	3,80	3,40	-
	⌋⌋	12,0	-	-	-	-	-	-	-	-	-	-
45,0	⌋	6,0	34,8	6,00	6,00	6,00	6,00	5,98	5,20	4,40	-	-
	⌋⌋	12,0	17,5	10,43	9,02	8,26	6,81	5,78	5,00	4,20	-	-
40,0	⌋	6,0	37,3	6,00	6,00	6,00	6,00	6,00	5,40	-	-	-
	⌋⌋	12,0	18,8	11,22	9,70	8,90	7,34	6,23	5,20	-	-	-
35,0	⌋	6,0	35,0	6,00	6,00	6,00	6,00	6,00	-	-	-	-
	⌋⌋	12,0	19,3	11,52	9,96	9,13	7,54	6,40	-	-	-	-
30,0	⌋	6,0	30,0	6,00	6,00	6,00	6,00	-	-	-	-	-
	⌋⌋	12,0	19,7	11,76	10,17	9,33	7,70	-	-	-	-	-

Hoist 37,0 kW FI							
⌋	t	1,4	1,8	2,8	4,6	5,8	6,0
	m/min	92	84	68	50	42	24
⌋⌋	t	2,8	3,6	5,6	9,2	11,2	12,0
	m/min	46	42	34	25	21	12
Drum capacity 820,0 m							

Hoist 45,0 kW FI							
⌋	t	1,5	2,0	3,6	4,8	5,6	6,0
	m/min	110	102	82	62	52	30
⌋⌋	t	3,0	4,0	7,2	9,6	11,2	12,0
	m/min	55	51	41	31	26	15
Drum capacity 860,0 m							

Power requirement	
400V (±10%) - 50Hz	

Shipping		
	Truck	Cont.
Top crane	4	5
Tower 2 units	1	1
Climbing	1	1
Chassis	1	1

Motor	18,5 kW FI	2 x 4,0 kW FI	2 x 5,0 kW
t/v	2,00 min	0,67 rpm	25,0 m/min
Power requirement		Hoist 37,0 kW	90 kVA
Upper part		Hoist 45,0 kW	100 kVA

Counter weight		Ropes	
Block	Weight	Hoist	D (mm) N/mm ²
Block 1	1 x 6,0 t		
Block 2	3 x 5,5 t		
Block 3	2 x 1,7 t		
Total	25,9 t		



EN 14439
WIND C 25

JOST Cranes GmbH & Co. KG
Schmiedweg 3
85604 Zorneding
Germany
Fon +49-8106 9995580
Fax +49-8106 9995582
Mail info@jostcranes.de
Web www.jostcranes.de