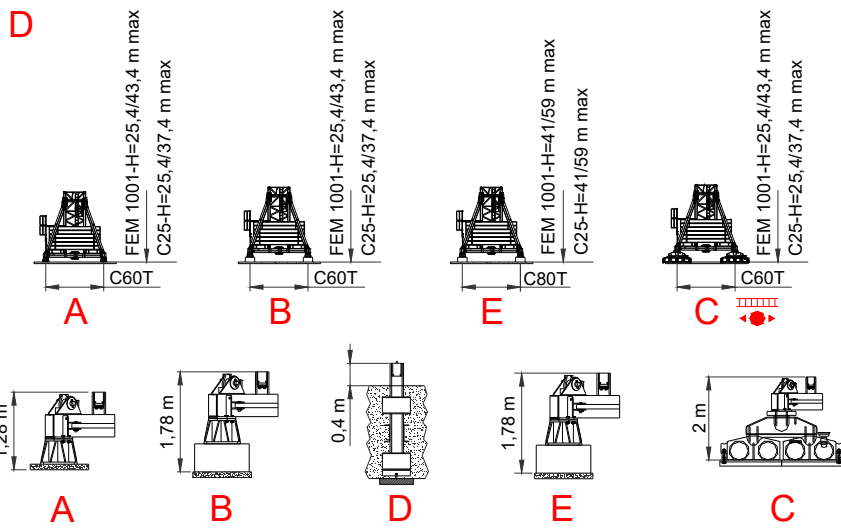
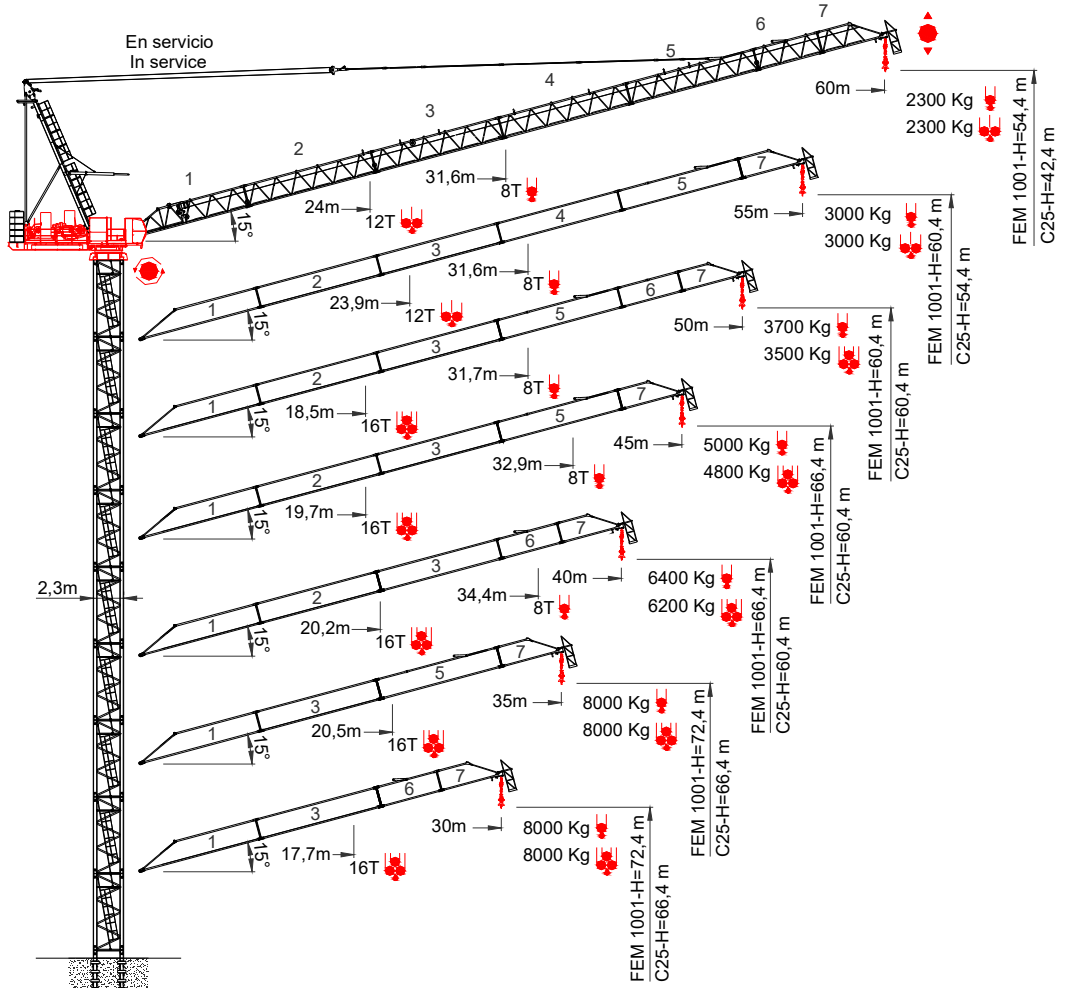


1. TECHNICAL SHEET

+44 0208 9537 800



### 1.1. LOAD DIAGRAMS

60 m	10	15	20	25	30	31,6	35	40	45	50	55	60	m		
	8000	8000	8000	8000	8000	8000	6879	5500	4434	3583	2888	2300	Kg		
	10	15	20	25	30	30,7	35	40	45	50	55	60	m		
	8000	8000	8000	8000	8000	8000	6532	5197	4165	3342	2669	2100	Kg		
	10	15	20	24	25	30	35	40	45	50	55	60	m		
	12000	12000	12000	12000	11371	8743	6887	5506	4437	3585	2889	2300	Kg		
55 m	10	15	20	23,8	25	30	35	40	45	50	55	60	m		
	12000	12000	12000	12000	11229	8584	6717	5327	4251	3394	2693	2100	Kg		
	10	15	20	25	30	31,6	35	40	45	50	55	60	m		
	8000	8000	8000	8000	8000	8000	6940	5586	4539	3702	3000	2400	Kg		
	10	15	20	25	30	30,8	35	40	45	50	55	60	m		
	8000	8000	8000	8000	8000	8000	6622	5309	4293	3481	2800	2200	Kg		
10	15	20	23,9	25	30	35	40	45	50	55	60	m			
12000	12000	12000	12000	11346	8768	6947	5591	4541	3703	3000	2400	Kg			
50 m	10	15	20	23	25	30	35	40	45	50	55	60	m		
	12000	12000	12000	12000	11203	8607	6773	5408	4352	3508	2800	2200	Kg		
	10	15	20	25	30	31,7	35	40	45	50	55	60	m		
	8000	8000	8000	8000	8000	8000	6923	5591	4558	3700	3000	2400	Kg		
	10	15	20	25	30	30,3	35	40	45	50	55	60	m		
	8000	8000	8000	8000	8000	8000	6634	5338	4334	3500	2800	2200	Kg		
10	15	20	23,4	25	30	35	40	45	50	55	60	m			
12000	12000	12000	12000	11258	8721	6928	5593	4559	3700	3000	2400	Kg			
45 m	10	15	20	23,4	25	30	35	40	45	50	55	60	m		
	12000	12000	12000	12000	11100	8548	6746	5404	4364	3500	2800	2200	Kg		
	10	15	18,5	20	25	30	35	40	45	50	55	60	m		
	16000	16000	16000	14973	11088	8541	6741	5401	4363	3500	2800	2200	Kg		
	10	15	20	25	30	32,9	35	40	45	50	55	60	m		
	8000	8000	8000	8000	8000	8000	7499	6122	5000	4000	3200	2600	Kg		
40 m	10	15	20	25	30	32,3	35	40	45	50	55	60	m		
	8000	8000	8000	8000	8000	8000	7238	5895	4800	3900	3200	2600	Kg		
	10	15	20	24,7	25	30	35	40	45	50	55	60	m		
	12000	12000	12000	12000	11969	9352	7502	6124	5000	4000	3200	2600	Kg		
	10	15	20	24	25	30	35	40	45	50	55	60	m		
	12000	12000	12000	12000	11803	9173	7314	5929	4800	4000	3200	2600	Kg		
35 m	10	15	19,7	20	25	30	35	40	45	50	55	60	m		
	16000	16000	16000	15800	11794	9167	7311	5928	4800	4000	3200	2600	Kg		
	10	15	20	25	30	34,4	35	40	45	50	55	60	m		
	8000	8000	8000	8000	8000	8000	7897	6400	5200	4200	3400	2800	Kg		
	10	15	20	25	30	33,5	35	40	45	50	55	60	m		
	8000	8000	8000	8000	8000	8000	7666	6200	5000	4000	3200	2600	Kg		
30 m	10	15	20	25	25,6	30	35	40	45	50	55	60	m		
	12000	12000	12000	12000	12000	9789	7899	6400	5200	4200	3400	2800	Kg		
	10	15	20	24	25	30	35	40	45	50	55	60	m		
	12000	12000	12000	12000	12000	9604	7706	6200	5000	4000	3200	2600	Kg		
	10	15	17	20,2	25	30	35	40	45	50	55	60	m		
	16000	16000	16000	16000	12280	9600	7704	6200	5000	4000	3200	2600	Kg		
30 m	10	15	18	20	25	30	35	40	45	50	55	60	m		
	8000	8000	8000	8000	8000	8000	8000	8000	8000	8000	8000	8000	Kg		
	10	15	18	20	25	30	35	40	45	50	55	60	m		
	8000	8000	8000	8000	8000	8000	8000	8000	8000	8000	8000	8000	Kg		
	10	15	20	25	25,8	30	35	40	45	50	55	60	m		
	12000	12000	12000	12000	12000	10010	8000	8000	8000	8000	8000	8000	Kg		
30 m	10	15	20	25	25,8	30	35	40	45	50	55	60	m		
	12000	12000	12000	12000	12000	10055	8000	8000	8000	8000	8000	8000	Kg		
	10	15	20	20,5	25	30	35	40	45	50	55	60	m		
	16000	16000	16000	16000	12756	10053	8000	8000	8000	8000	8000	8000	Kg		
	10	15	18	20	25	30	35	40	45	50	55	60	m		
	8000	8000	8000	8000	8000	8000	8000	8000	8000	8000	8000	8000	Kg		
30 m	10	15	18	20	25	30	35	40	45	50	55	60	m		
	8000	8000	8000	8000	8000	8000	8000	8000	8000	8000	8000	8000	Kg		
	10	15	20	22,2	25	30	35	40	45	50	55	60	m		
	12000	12000	12000	12000	10420	8000	8000	8000	8000	8000	8000	8000	Kg		
	10	15	20	22,2	25	30	35	40	45	50	55	60	m		
	12000	12000	12000	12000	10475	8000	8000	8000	8000	8000	8000	8000	Kg		
30 m	10	15	17,7	20	25	30	35	40	45	50	55	60	m		
	16000	16000	16000	13948	10472	8000	8000	8000	8000	8000	8000	8000	Kg		

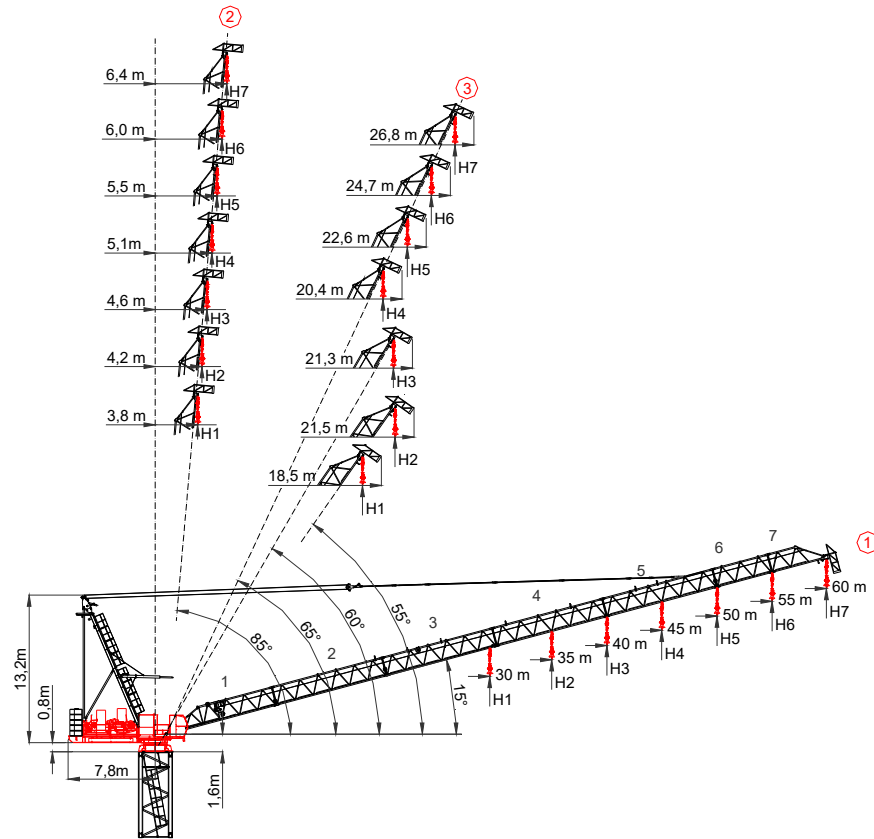


#### IMPORTANT

The load curve diagram reflects the maximum net load that the Luffing crane can hoist. In case any auxiliary lifting or apprehension component (chains, carrying pallets, etc...) would be used, the weights shall be reduced to the net load that can be lifted by the Luffing crane for each jib length.

This table has been calculated taking in consideration for IV falls and a 48 meters high tower. For higher tower heights configurations, the lifting capacity has to be reduced according to the extra lifting rope weight.

## 1.2. MECHANISMS



- ① Pluma maxima - Portée maxi - Sbraccio massimo - Maximum jib - Max. Ausleger
- ② Pluma min. en servicio - Portée min. in service - Minimum jib (in service) - Sbraccio min. in servizio - Mindst. Ausleger in Betrieb
- ③ Pluma min. fuera de servicio - Portée min. hors service - Minimum jib (out of service) - Sbraccio min. fuori servizio - Mindst. Ausleger ausser Betrieb

90 Hp (67Kw)-INV LEBUS 700m		 H.B.G 350m Ø16			 H.B.G 230m Ø16			
	m/min	0-39,8	0-120	0-159	0-26,5	0-80	0-106	
	Kg	8000	2300	1450	12000	3450	2150	
	Kw	67	67	67	67	67	67	
		 H.B.G 175m Ø16						
		0-19,9	0-60	0-79				
		16000	4600	2900				
		67	67	67				
		1,7 min. de 15° a 85° 1,7 minutes from 15° to 85°						
	Kw	67						
	r.p.m	0-0,72						
	Kw	2 x 10,8						
	m/min	0-24						
	Kw	2 x 10,8						
		 2000/14/CEE 2005/88/CEE		 2006/95 /CEE		400 V 50 Hz 60 Hz		100m 4x95mm <sup>2</sup>
		450 kVA		150 KW				

- Elevación / Hoisting / Heben / Levage / Sollevamento
- Elevación de pluma / Luffing / Ausleger-Einziehen / Relevage / Brandeggio
- Orientación / Slewing / Schwenken / Orientation / Rotazione
- Traslación / Travelling / Schienenfahren / Translation / Traslazione
- Cable / Rope / Seil / Câble / Funne